

# Victoria – 1 & 2 bed – SW1

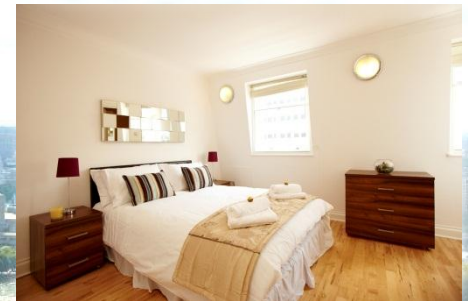
This selection of one- and two-bedroom apartments on the doorstep of Victoria station are fantastic options for anyone visiting London. Situated moments from world famous theatres, Westminster Cathedral and Buckingham Palace the Victoria apartments offer the **perfect location for leisure and corporate clients**. For fans of the Royal Family, it 's worth mentioning that Buckingham Palace is only meters away from this property.

With comfortable and modern surroundings and a fully-equipped kitchen and bathroom the Victoria apartments offer excellent opportunity for those wanting to experience London in all its glory.

Each apartment benefits from high-speed WiFi internet, cordless telephone, iPod dock, and a 32" flat-screen TV. Add to this the luxury complimentary toiletries and many more in-apartment amenities; the Victoria presents itself as a **truly luxurious serviced apartment**.

## A snapshot

<b>Bedrooms</b>	One- and two-bedroom (two bathroom) apartments
<b>Amenities</b>	Modern bathroom, fully-equipped kitchen, open-plan living room (dining included)
<b>Size</b>	650sqft- 770sqft / 60sqm - 72sqm
<b>Transport</b>	Victoria, & St James Park stations 5- 10 min walk
<b>Close to</b>	Houses of Parliament (Big Ben), Buckingham Palace, St James' Park , Hyde Park, Knightsbridge & More.
<b>Internet</b>	Complimentary high-speed broadband (WiFi).
<b>Capacity</b>	Two people per bedroom plus one extra guest (fold out bed)
<b>Location</b>	SW1W ORE (refer to Google maps.co.uk)
<b>Smoking</b>	No smoking in apartment or building



**Boutique London Lets**

See all photos online!

[www.boutiquelondonlets.com](http://www.boutiquelondonlets.com) | +44 (0) 845 680 0 679 | [info@boutiquelondonlets.com](mailto:info@boutiquelondonlets.com)

Theatres,  
palaces &  
royal parks  
outside  
your front  
door

Victoria, Westminster brought to you by Boutique London Lets



# Perfect for business, great for pleasure

Book online, email or call us. We have apartments throughout central London and offer studios, one-, two- and three-bedroom options.

## Price guide

	One-bed		Two-bed	
	Low:	Peak:	Low:	Peak:
2-3 nights:	£136.85	£182.55	£184.87	£246.50
4-7 nights:	£119.15	£158.80	£160.84	£214.45
8-13 nights:	£109.55	£146.05	£147.90	£197.20
2-4 weeks:	£100.05	£133.45	£135.19	£180.25
5+ weeks from :	£94.45	£125.95	£127.56	£170.09

Nightly supplement: **£20** per person per night

Early check-in / Late check-out – pending availability: **£75**

Extra clean, linen and towel change: **£50**

Extra services available – see website for details.

NOTE: Rates shown are indicative prices only. Prices fluctuate depending on season & demand. Minimum stay lengths may also apply. All prices include VAT & taxes. Full booking terms & conditions on website. Corporate rates available.



See our website for best available rates. There's walk-through videos, maps, Trip Advisor reviews, London tips, photos & more.

